

InstaDigin

A product of Easyinfra Techno Private Limited
(start-up recognised by Govt. of India)

Building digital solutions for
Mining and Infrastructure Industry

Credentials





Data Analytics platform for **mining** and infrastructure operations

InstaDigin is a **real time monitoring and analytics platform** designed for improving efficiency & optimizing operations through a **cloud based B2B SAAS offering**.

MODULES

- **Data integration and analytics** –IOT, ERP or others
- **Fleet management** – Manage own and rental fleet, KPIs
- **GPS Tracking** – Trip counts, route replay, alerts
- **Fuel management** – consumption, detect drain/theft
- **Project and site management** – workforce role, task management
- **Document management** – vehicle & project docs
- **Mineral Exploration database management system** – geo-mapping, log management
- **Manage forms** – statutory compliances and internal reporting, approval matrix
- **video analytics** – detect congestion, violations etc.

www.instadigin.com

Industries



Mining



Construction



Manufacturing



Logistics



Power

Highlights

5000+ Vehicles/ Machines

10 Lakhs+ Data points/day

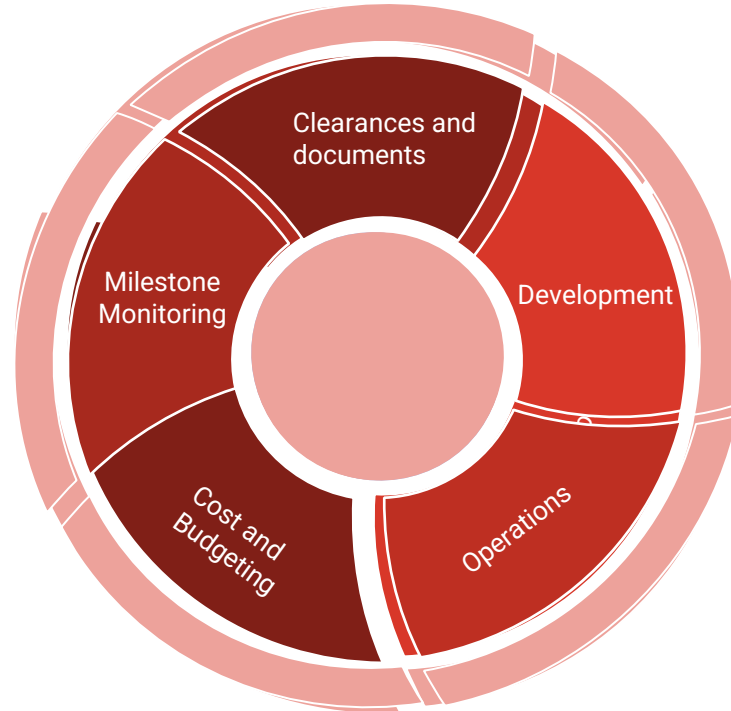
Clients



Mining project monitoring and analytics platform – Client (confidential)

- Track progress of approvals
- Manage centralized documents

- Track project milestones and dependencies
- Update progress and completion status



- EPC activities
- monthly progress

- Fund requirement across project phases
- Track actual expenditures against budgets

- Machinery availability and utilisation
- Fuel consumption trends
- Manpower allocation
- Maintaining compliances

Limestone mines: Mineral Exploration Database Management System



UltraTech Cement (largest cement producer in India) has limestone and coal mines. We are developing mine exploration monitoring and database management system for UltraTech.

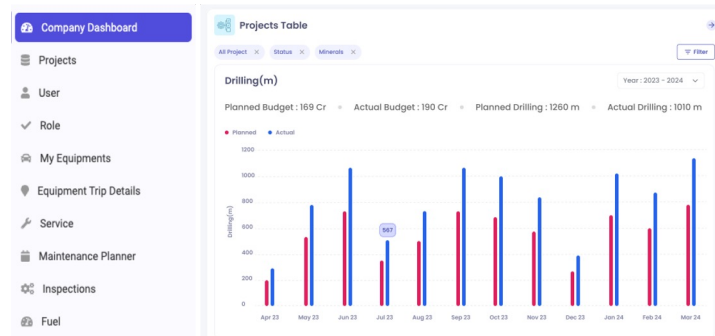
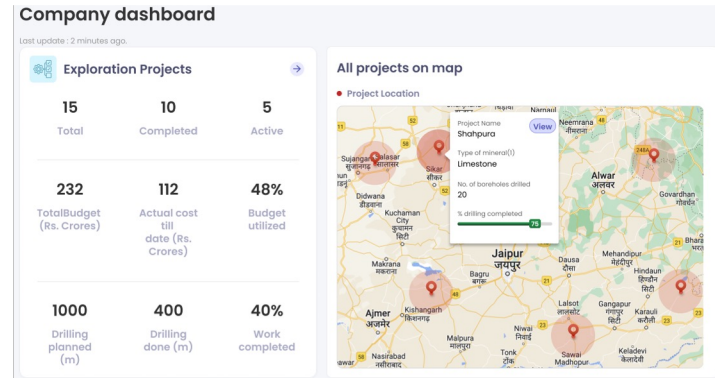
Geo mapping – Integration with mapping tools and display mining area and bore holes on the application.

Capability to upload KML files or by entering location coordinates.

Log management – Capability to collect, store and analyse daily exploration activities such as drilling, lithology, chemical analysis etc.

Document management – Upload, store, and manage documents

Business Intelligence & Analytics – Dashboards indicating project completion in real-time. Intelligent Reports & Dashboards on live data with actionable insights.



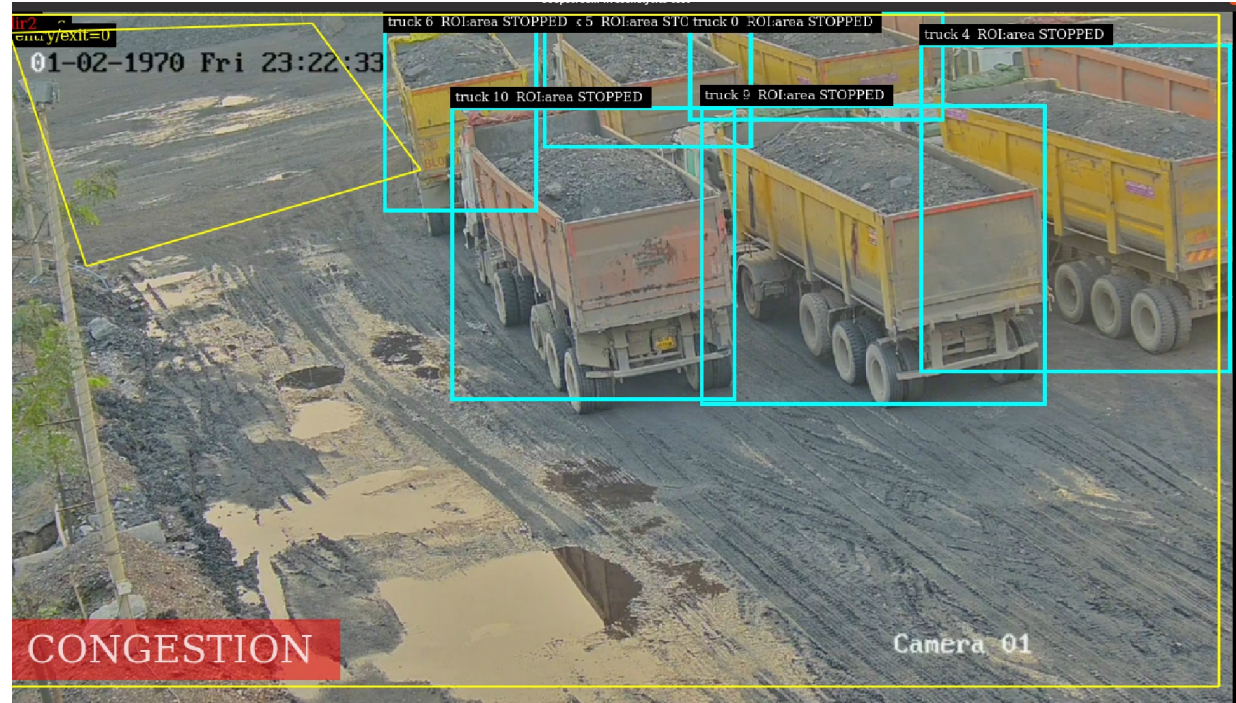
Video analytics for detecting truck congestion at a coal based power plant



Successfully detection of truck congestion using video analytics at the Coal Handling Plant of Jindal Power Limited at Tamnar, Chhattisgarh.

Key activities:

- Real time processing of video feed to detect the number of trucks within the specific zone
- Real time alert generation for congestion

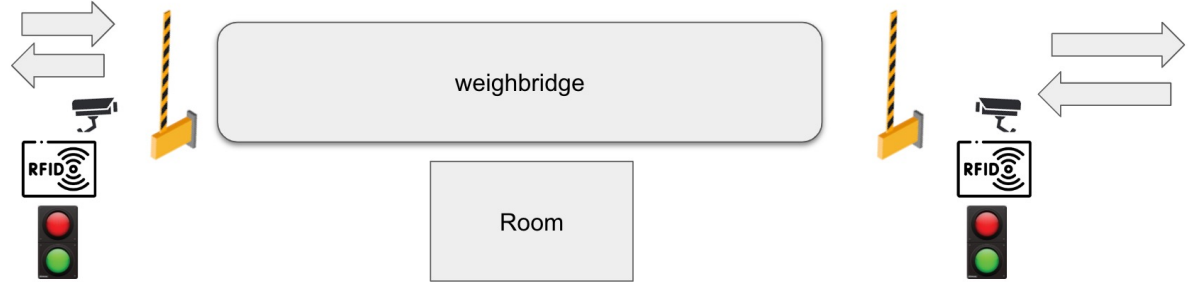


Coal mine: RFID and boom barrier based vehicle tracking system



Kalyaneshwari Tasra Mining Pvt. Ltd (subsidiary of Powermech Projects) is working as MDO at Tasra coal mine of SAIL.

We are implementing RFID based truck tracking system at multiple check points in the project.



Hardware supply, installation and integration

RFID readers, boom barriers, handheld RFID readers, camera, printers etc.

Application development – Trip and challan creation for coal dispatch, integration with weighbridge, hardware, RFID, boom barrier, camera etc.

Business Intelligence & Analytics – Dashboards showing trip analysis, automated reports, key notifications

Coal mine: GPS tracking of dispatch trucks

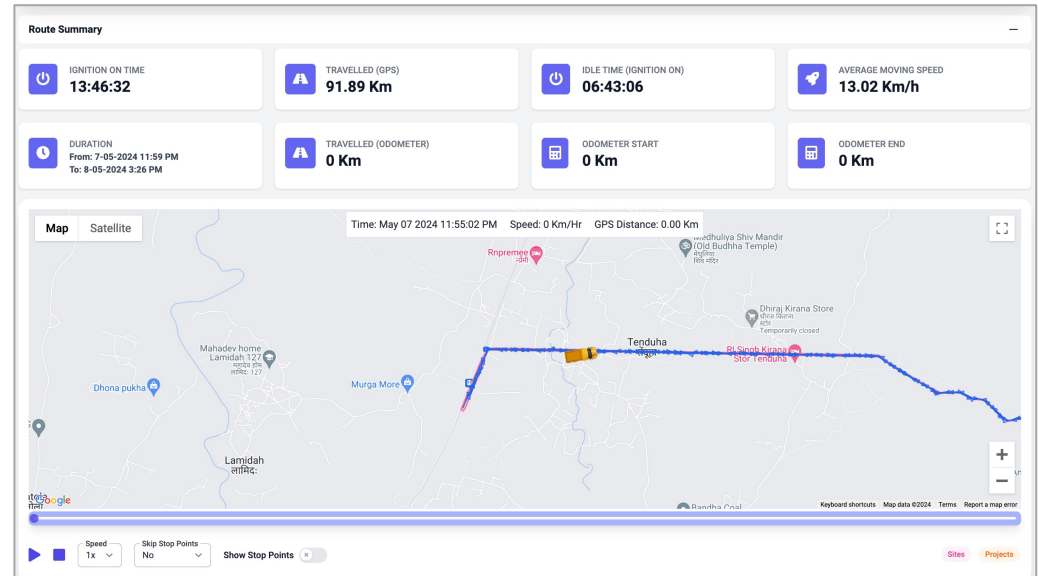


Amelia Coal Mining Limited (ACML) is a subsidiary of Essel Mining & Industries Limited (EMIL). ACML has appointed contractors to transport coal from Amelia mine to railway siding.

We are implementing GPS based tracking for real time monitoring for trucks carrying coal from mine.

Key dashboards/reports:

- Live location tracking, route replay
- Trip counts
- Trip analysis
- Geofence violations
- Vehicle document management
- Key alerts



Construction: GPS tracking and Dashboards from SAP data

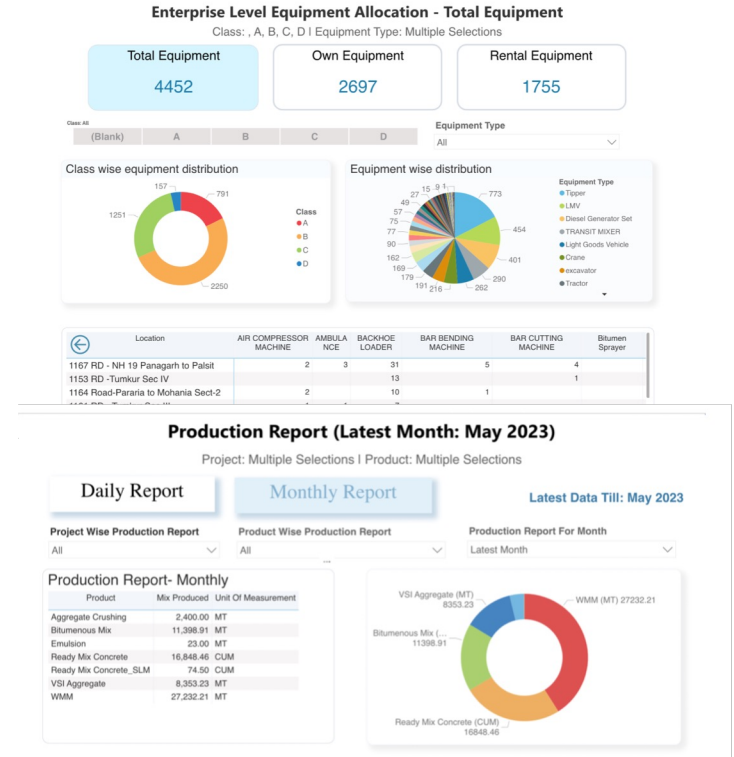
Ashoka Buildcon (listed infrastructure and construction company) is using InstaDigIn for data analytics, GPS tracking and managing its heavy machineries across various construction sites.

GPS based tracking of more than 300 machineries..

Shift log information of more than 4000 machineries is fetched from SAP to an FTP folder on daily basis. Our software does reading, processing, storage and dashboard creation from the data received without any manual intervention.

Key dashboards/reports:

- Location tracking
- Enterprise and project level equipment allocation
- Assessing utilization and idle time
- Production report
- Breakdown report
- Cost analysis



Construction – GPS tracking, fuel management through IOT sensors

Aakshya has infrastructure construction projects in Assam, Maharashtra and Jharkhand. The company is using InstaDigIn for data analytics, GPS tracking and fuel management across various construction sites.

IOT sensors installed on fleet (excavator, dumper, dozer, vehicles etc) sends real time data on our cloud based system and our software does reading, processing, storage and dashboard creation from the data received without any manual intervention.

Key dashboards/reports:

- Enterprise and project level equipment allocation
- Location tracking
- Fuel consumption: opening balance, fuel refuelling, closing balance, mileage
- Mobile App for machinery logs
- Automated daily shift reports sent on mail

Equipment Fuel Summary Show/Hide Columns 8 Selected Export CSV

Start Date: 5-12-2023 End Date: 6-12-2023 Start Time: 06:00:00 End Time: 05:59:59 Equipment Type: TIP Sites: All

Registration Number	Site Location	Equipment Type	GPS Total Km	Sensor - Opening Fuel Balance (L)	Sensor - Fuel Issued (L)	Sensor - Closing Fuel Balance (L)	Sensor - Fuel Consumed (L)
MH43BX6895	Manja_Assam	TIP	0.00	236.80	--	0.00	0.00
MH43BX6874	Manja_Assam	TIP	0.00	154.00	--	0.00	0.00
NL01AF2778	Manja_Assam	TIP	0.11	66.50	--	66.00	0.50
MH43BX6892	Manja_Assam	TIP	0.00	273.90	--	0.00	0.00





Thank you!

Contact us

contact@instadigin.com

+91-8824420642

Website: www.instadigin.com
www.aurigait.com

https://www.youtube.com/watch?v=OdlxJ_dyWs